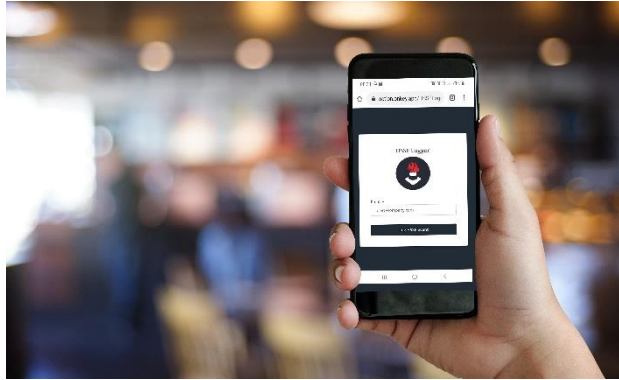




HSSE Logger Application

Health, safety, security and environmental event logging simplified



Simplifying event logging

The HSSE Logger app enables your entire team to comfortably log potential or actual health, safety, security and environmental events, while your management team tracks, trends and accurately reports on HSSE risks as it relates to your business. It further enables the contactless reporting and tracking of Covid-19 related symptoms and exposures for your staff, visitors and mandataries.

Benefits

- User friendly app that provides employees, contractors and visitors easy access to report health and safety related incidents
- Traceability and systematic management of logged HSSE events
- HSSE communication and awareness
- HSSE incorporated into AM and Maintenance Management processes
- BI Reporting for improved HSSE decision making
- Covid-19 compliance and symptom tracking

Proven Results

HSSE

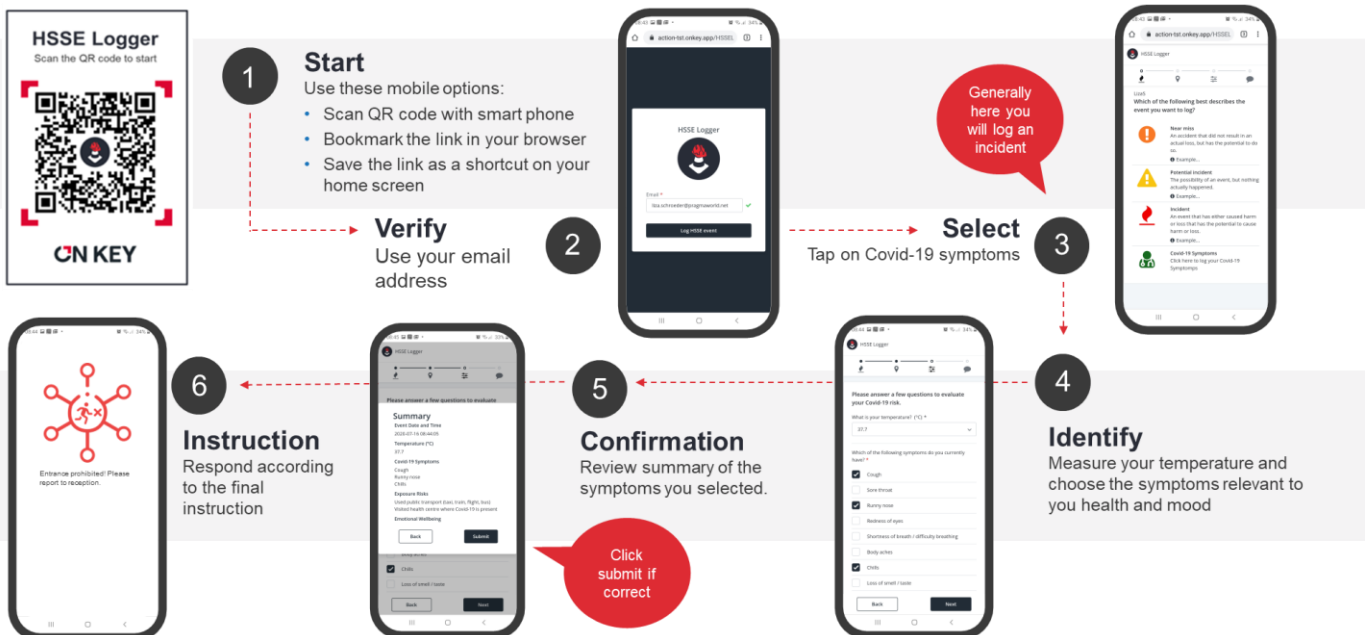
- Instant recording of HSSE events
- Analysis capabilities that feed into risk assessments and the continuous, real-time monitoring of leading and lagging indicators
- Enables proactive risk mitigation actions
- Enhances HSSE communication, awareness and culture within the organisation

Covid-19 Symptoms

- Record keeping of symptoms and exposures in support of traceability and legal compliance
- Enhance access control
- One system for staff, visitors and mandataries
- Mobility – able to track from anywhere, anytime

Try it out

Follow these quick steps to check your Covid-19 related health status



HSSE Logger App

Health, safety, security and environmental event logging simplified

Key Features

- Authenticate with email linked to staff member
- Select the type of HSSE event
- Answer quick-select, company-specific questions about the nature of the event
- Describe the event and attach images
- Multiple sites can be added to specify where a reported event took place
- Log the request to be actioned by the HSSE department
- Monitor HSSE compliance according to specified criteria

Pricing

- In addition to licensing, there is a fixed setup cost and a monthly hosting fee.
- Licensing fees are calculated based on the number of users.

App in support of HSSE risk and compliance management

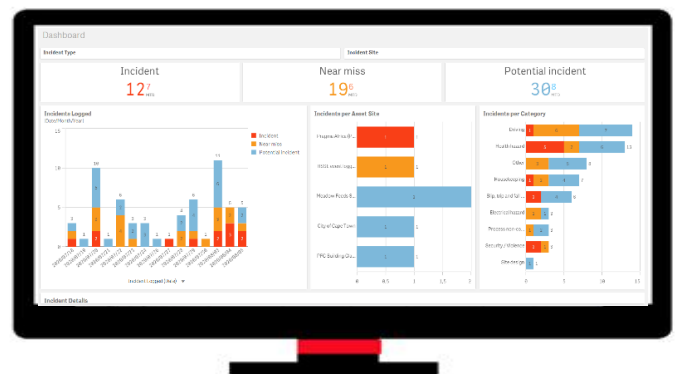
- Ensure that HSSE events are reported, recorded, investigated, re-called and closed out in accordance with company-specific processes and legal obligations.
- Bring baseline risk assessments to life through data collected by users.
- Analytics enable a balanced view of both predictive and lagging indicators that lead to greater risk intelligence.
- Develop focused assurance plans and KPIs to measure HSSE performance.
- Create targeted competence development programmes to make businesses more aware of the HSSE imperative, and to act accordingly.

Powerful Analytical Tool

- Reporting in the app is underpinned by a powerful analytical tool.
- On Key Insights enable managers to conveniently view selected HSSE information on their mobile devices whenever connected to the internet. This keeps your management updated with important measures related to their area of responsibility even when they are not at their desks.
- BI dashboards can be utilised to manage HSSE related KPIs and proactively identify risks.



Track the emotional well-being of your users related to Covid-19.



Track the type of incidents reported over any given period of time to identify trends and improvement areas.

Try it out

Watch a video demonstration of the dashboard on the On Key website by following this [link](#).